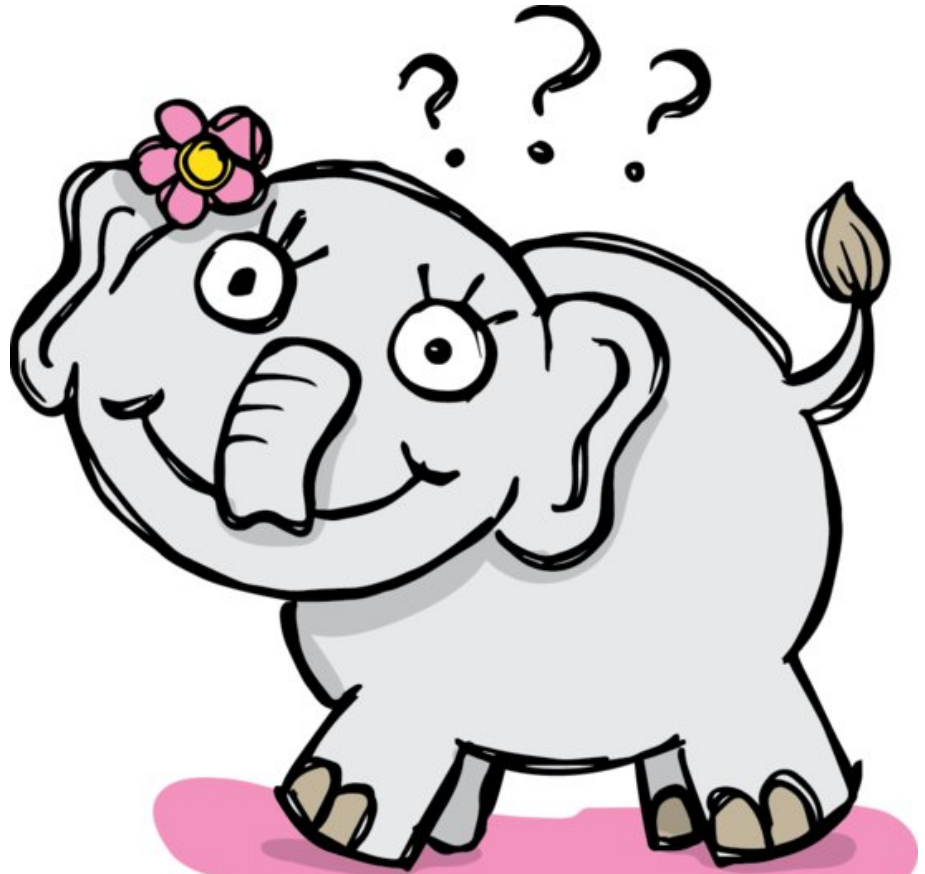
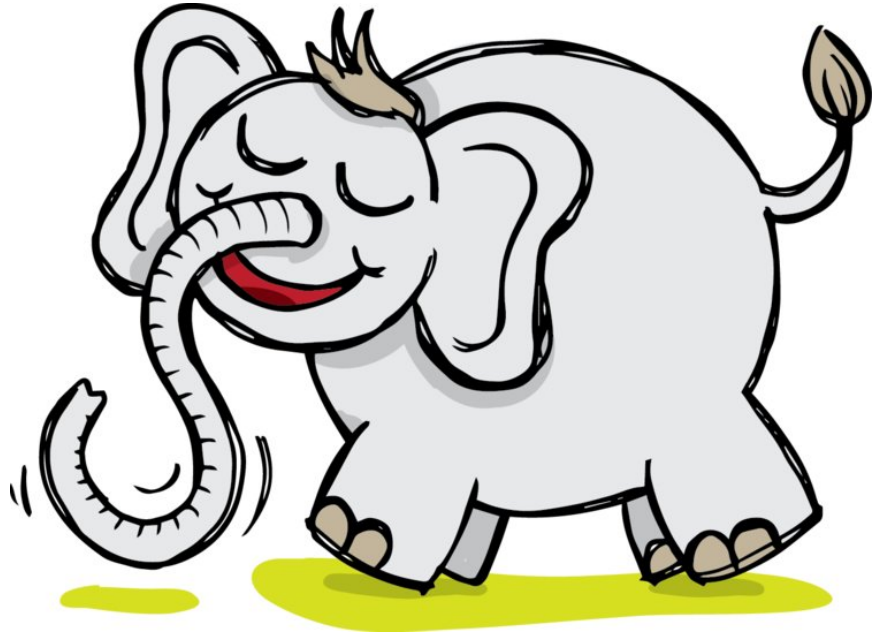


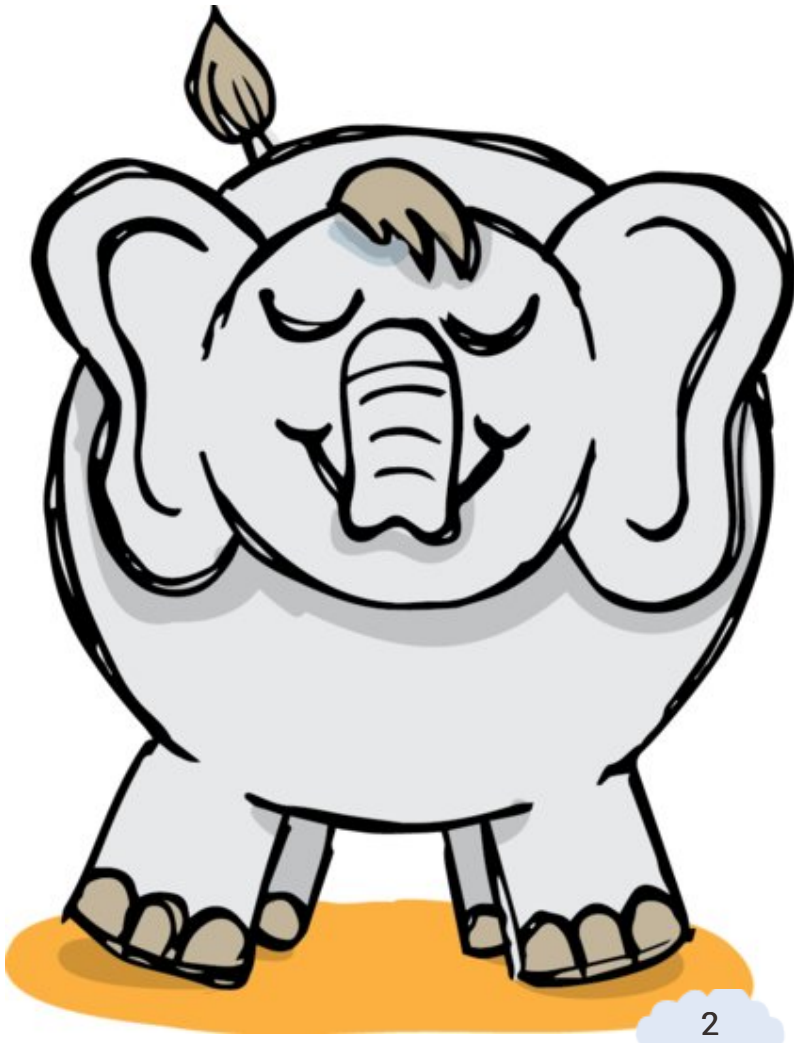
Ngwana wa tlou wa  
go rata go tseba  
kudu

Judith Baker and Lorato Trok  
Sepedi



Ka moka re tseba ga botse  
gore tlou e nale nko e  
telele.





Eupša kgalekgale, nko ya  
tlou e be ele e kopana e bile  
e nonne. Bjalo ka seeta  
gare ga sefahlego sa yona.

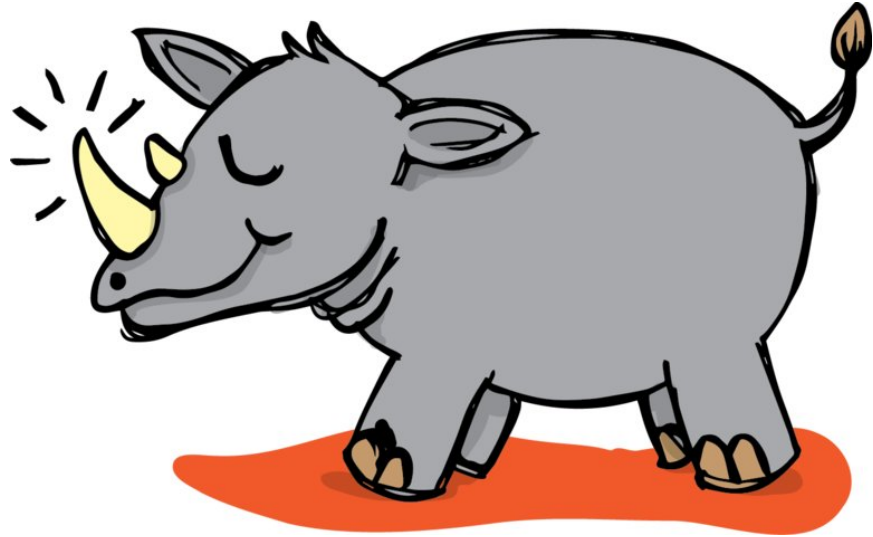
Ngwana wa tlou wa go rata  
go tseba kudu a tswalwa. O  
be a nale diputšišo ka  
phoofolo yengwe le  
yengwe.

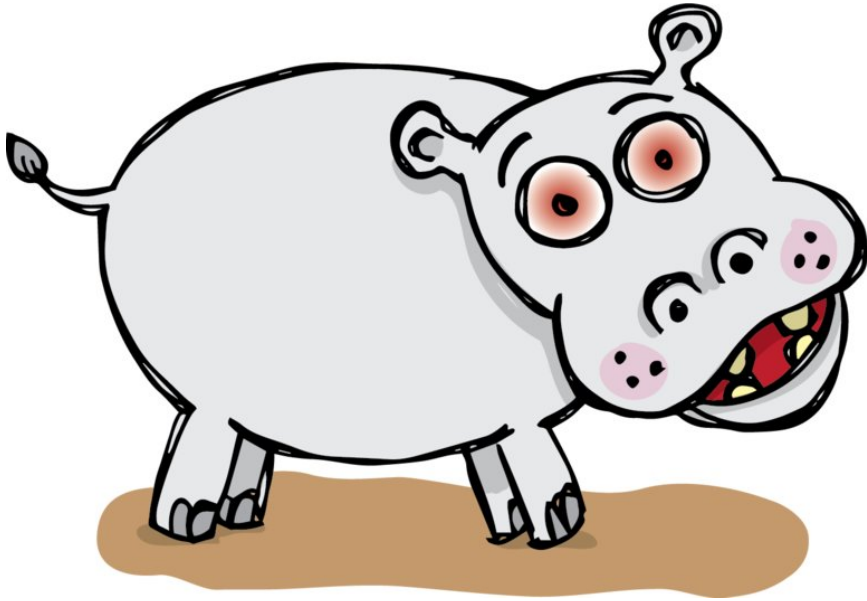




O be a rata go tseba ka  
Thutlwa “goreng o nale  
molala o motelele?

O be a rata go tseba ka  
Tshukudu. Goreng lenaka  
la gago le nale ntlha?



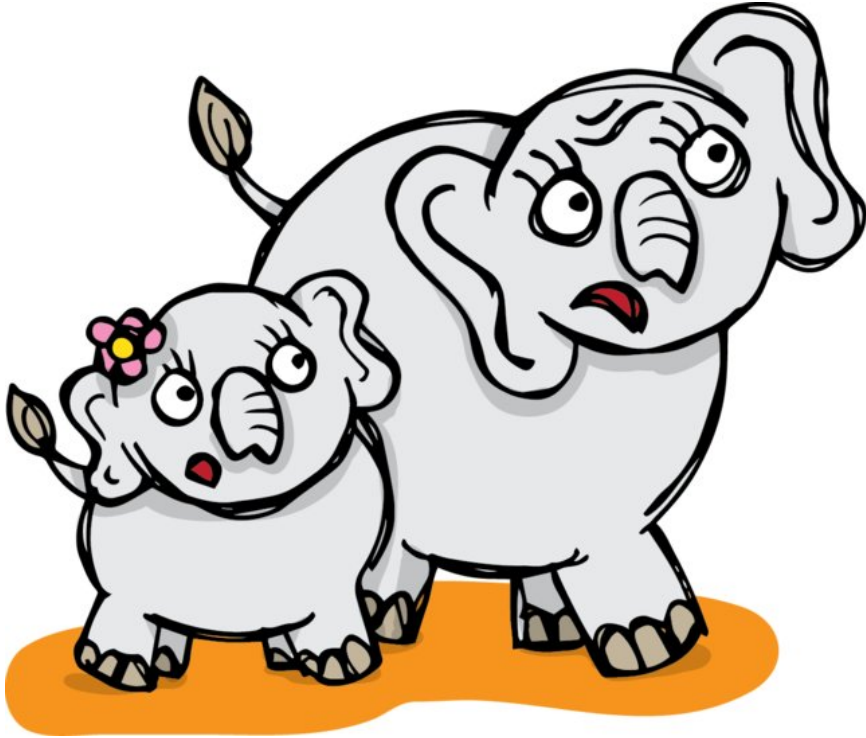


O be a rata go tseba ka  
Kubu. Goreng mahlo a  
gago e le a mahwibidu?

Gape o be a rata go tseba  
kudu ka ga Kwena. Naa  
dijo tša kwena tša dilalelo  
ke dife?



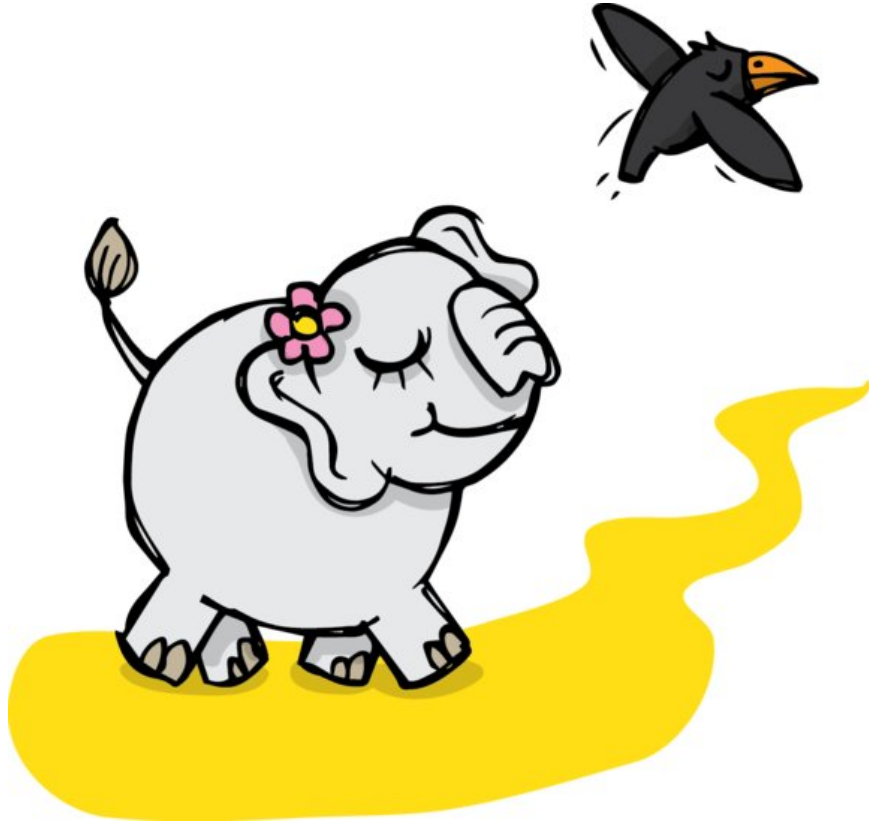




O seke wa butšiša putšišo  
ya go swana le ye? Gwa  
realo mmagwe, a sepela a  
šuntše sefahlego.

Eupša Legokobu la  
matlhale ka pijana lare  
"ntšhale morago nokeng.  
Moo o tlo bona gore Kwena  
e lalela ka eng?"



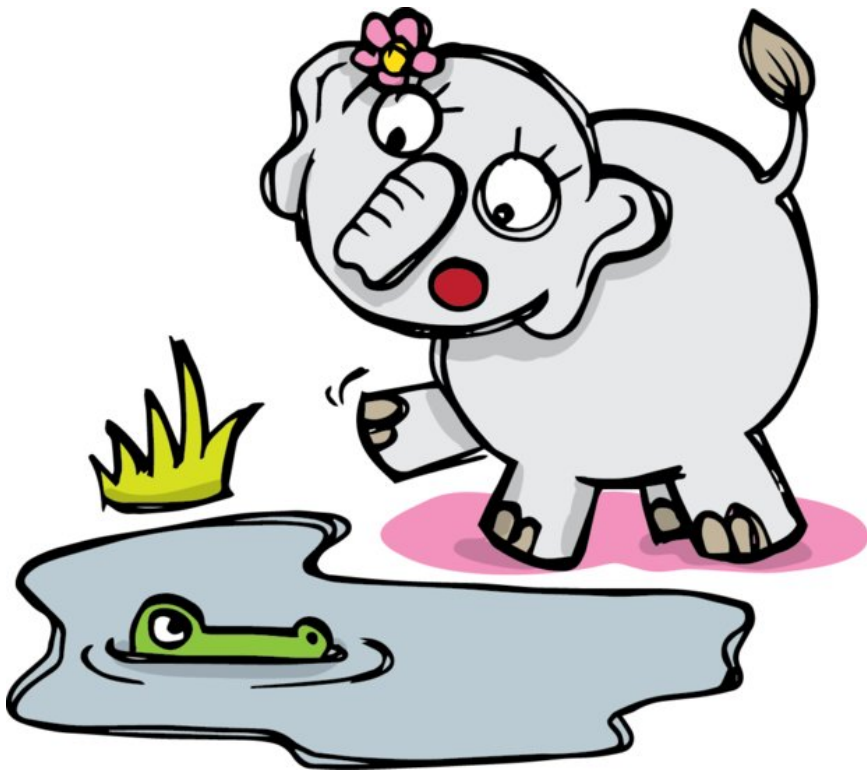


Bjale tlowana ya latela  
legokobu go ya nokeng.

A kgorometša  
matlhakanoke, a tse  
gare ga ona a ema leribeng  
la noka.

A lebelela ka gare ga  
meetse "naa kwena e kae?"





"Dumela" gwa realo leswika  
kgauswi le leriba la noka.  
"Dumela" gwa realo  
tlowana. Mohlomongwe o  
ka mpotša gore Kwena e  
lalela ka eng?

Inamela fase fase ke tla go  
botša. "Gwa realo leswika"  
bjale tlowana ya inamela  
fase gofihlela.....





Phuthuuu!!!! Nko ya gagwe  
e be e le ka gare ga legano  
la Kwena.

Gwaaaaaaa!!! "Kwena e tla  
lalela ka wena" gwa realo  
Legokobu.

Tlowana ya tsepelela ka  
maoto a yona a go tia, ya  
goga, ya goga, ya goga.  
Eupša Kwena ya se mo  
tlogele.





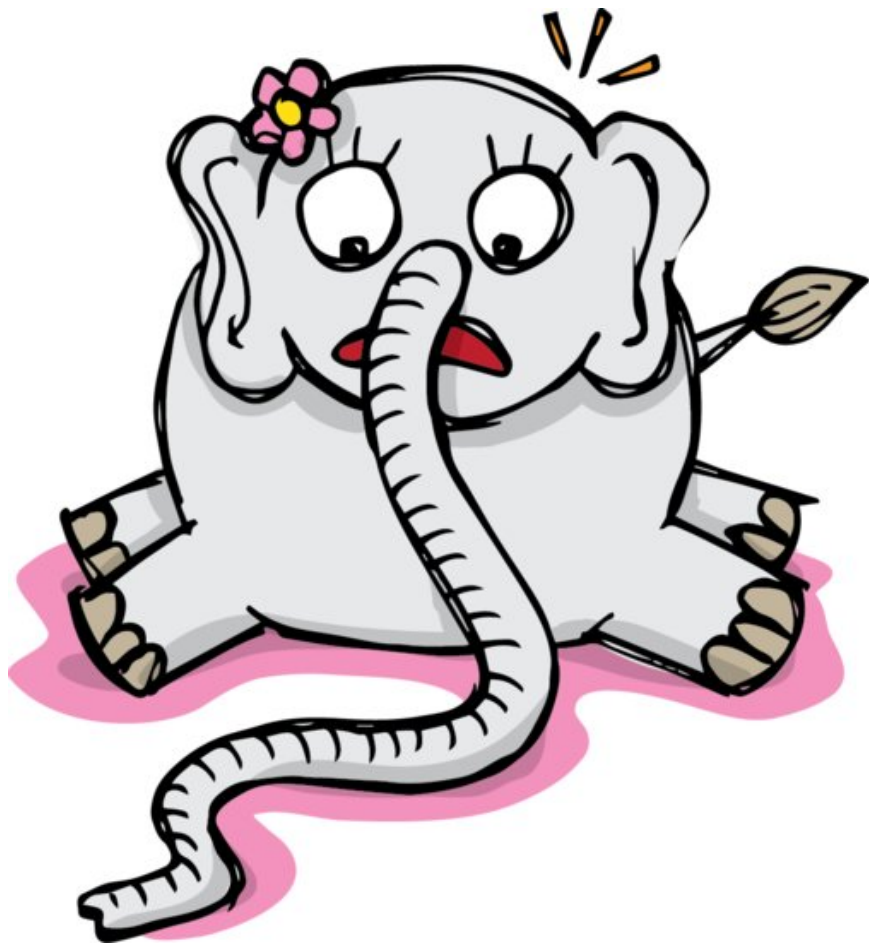


Nko ya Tlowana e ile ya  
taologa, ya taologa ya  
taologa go fihlela .....

Phuuuuu!! Ka mokokotlo

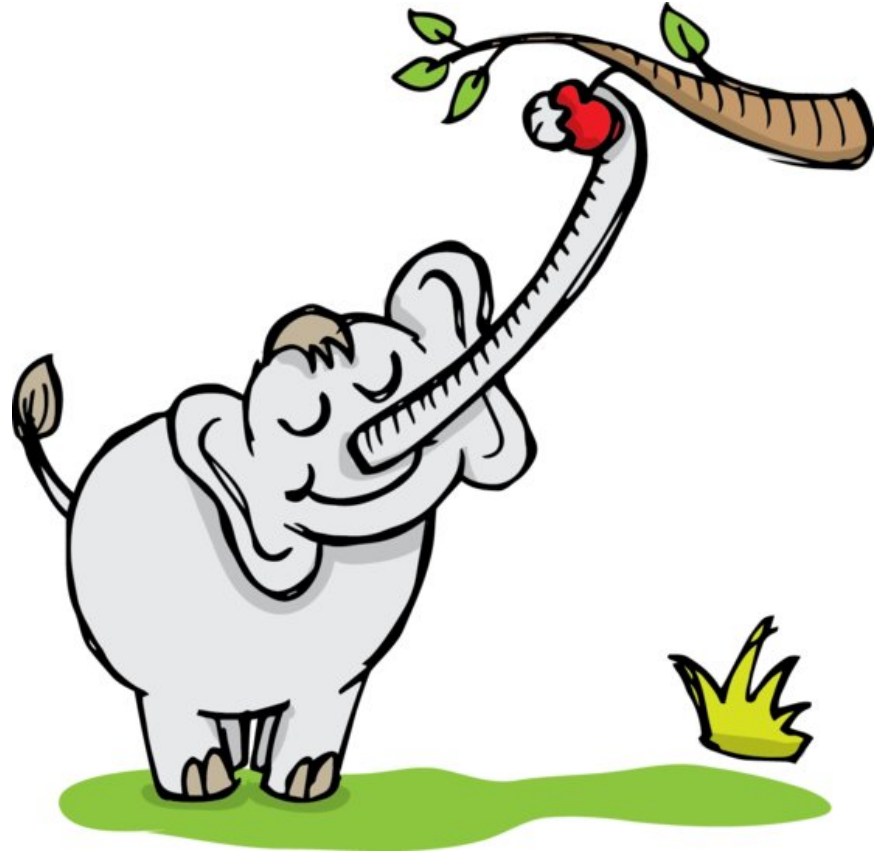
Kwena ka go befelwa e ile  
ya boela meetsing ka ge e  
phonnwe ke dijo tša go  
lalela.





Tlowana e ile ya lebelela  
nko ya yona, e sa kgone go  
bona gore e felela kae.

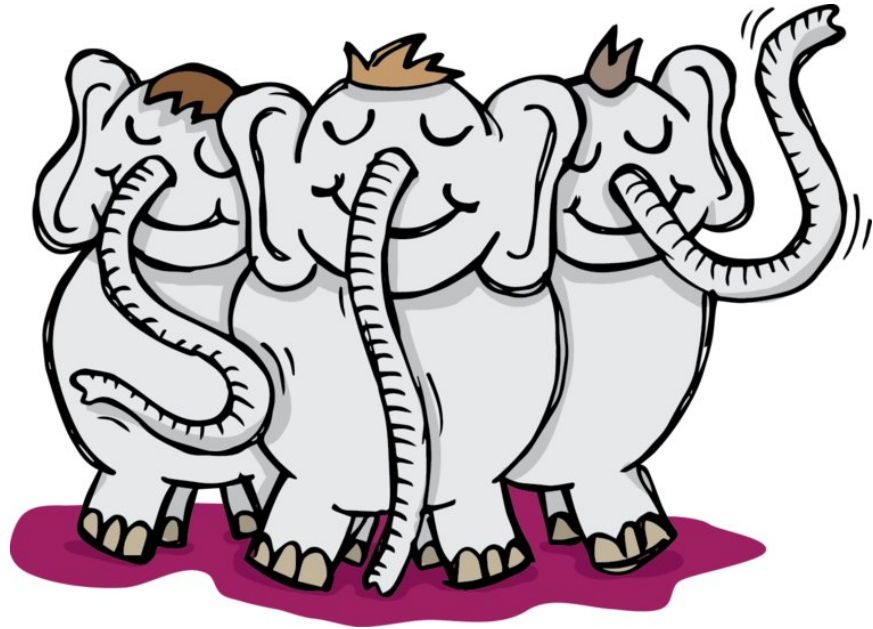
E be e le e telele e kgona  
go kga di enywa dikaleng  
tša godimo tša mohlare.





E kgona le go ihlapiša ka  
meetse ge letšatši le fiša.

Go fihla le ka letšatši le,  
ditlou kamoka di nale dinko  
tše ditelele tša goba le  
mohola.



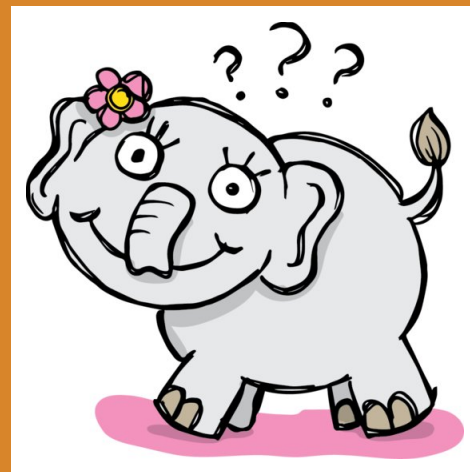
# Ngwana wa tlou wa go rata go tseba kudu

Writer: Judith Baker and Lorato Trok

Illustration: Wiehan de Jager

Adapted By: Atteridgeville pilot teachers

Language: Sepedi



© Judith Baker and Lorato Trok, 2014



This work is licensed under a Creative Commons Attribution  
(CC-BY) Version 3.0 Unported Licence

Disclaimer: You are free to download, copy, translate or adapt this story and use the illustrations as long as you attribute or credit the original author/s and illustrator/s.

**Saide**   
South African Institute  
for Distance Education

[www.africanstorybook.org](http://www.africanstorybook.org)  
A Saide Initiative